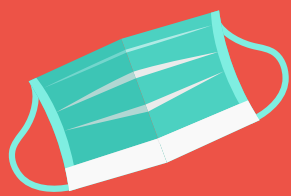




KEEPING SINGING GROUPS SAFE



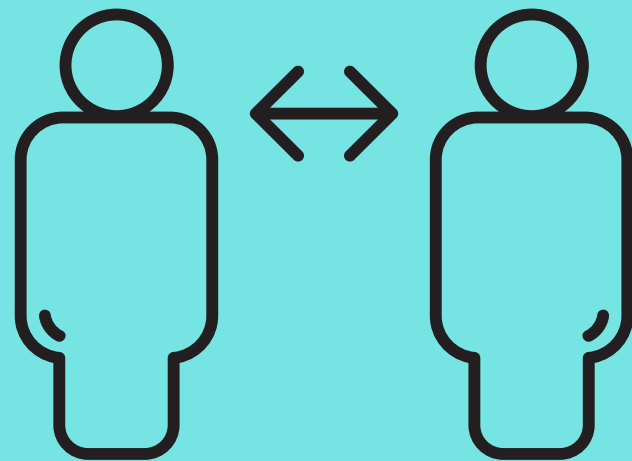
MASK EVERYTHING



singers,
instrumentalists,
conductors
with masks and visors

DISTANCE

2.5m in every direction



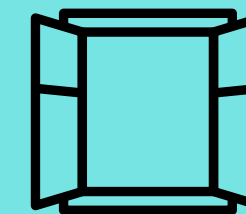
PROPER HYGIENE

- Instruments
- equipment
- spaces
- people



AIRFLOW

Good ventilation and
air change rate for the space



MATERIALS MATTER

well fitting 3 layer masks
for singers and conductors



RISK ASSESSMENT

Do a risk

- assessment
- for each venue
- and update
- as required



OUTDOORS

- Masks
- 30min blocks
- Break for 5 minutes between blocks
- 2.5m spacing in all directions
- Ideally single line of singers

TIME



INDOORS

- Masks and visors
- 1hr blocks with outdoor breaks for 5 minutes every 15 mins for room ventilation.
- 2.5m spacing in all directions
- Ideally single line of singers